

Carrier 30 RW 045

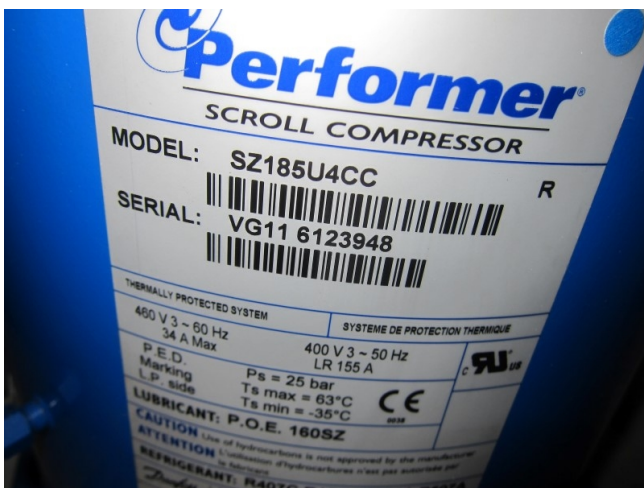
Specifications

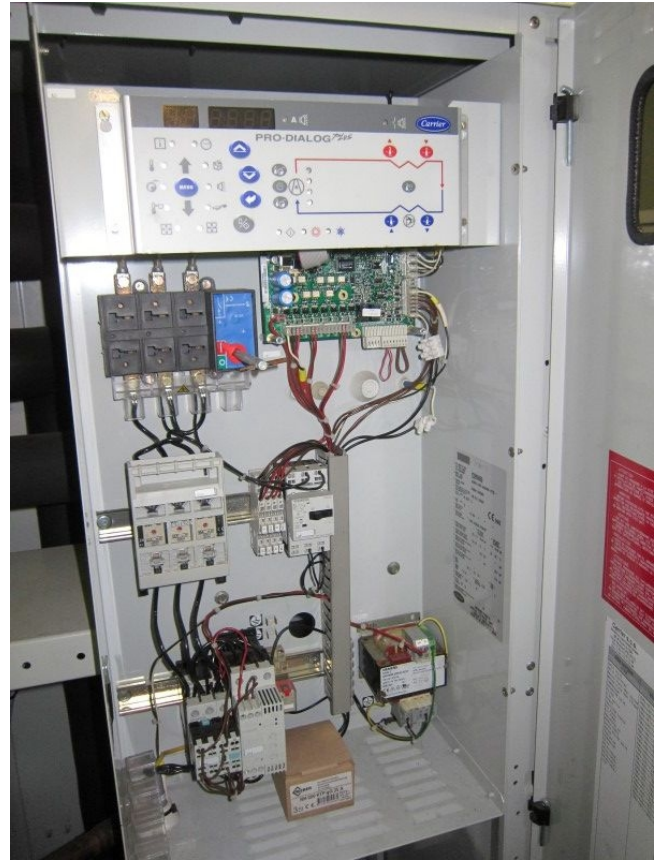
Merk	Carrier
Type	30 RW 045
Product type	Water Cooled Chiller
Capaciteit kW	45,3
Capaciteit Tons	12,9
Koudemiddel	Freon
Koudemiddel Type	R407C
Gewicht in kg.	387 kg.
Afmetingen	1240x690x1920 mm (LxWxH)
Opmerkingen	y.o.b. 2009 // 1x Compressor Performer SZ185 // Including 2x heat exchanger
Meer informatie?	See attachment as an .pdf file
Stock	1



Description

Used Carrier 30 RW 045





120909469

1 - (FR) NUMERO DE SERIE / (EN) SERIAL NUMBER / (DE) SERIENNUMMER: **12U909469**

2 - MODELE - MODEL / MODELLNUMMER: **30RW-045-A0006-PEE - -**

3 - VARIANTE VARIANT / VARIANTE: **30RW/30RWA**

4 - ANNEE DE FABRICATION ET DATE D'ESSAI / YEAR OF MANUFACTURING AND TEST DATE / HERSTELLUNGSDAHR UND DATUM: **28/07/2009**

5 - FLUIDE - REFRIGERANT / KÄLTEMITTEL: **R 407 C**

6 - GROUPE - GROUP / GRUPPE: **2**

7 - CHARGE CIRCUIT A/B / REFRIG. CHARGE A/B / KREISLAUF A/B: **6.20 Kg / * Kg**

8 - FLUIDE D'INERTAGE / INERTING REFRIG. / NEUTRALISIERUNG-REFRIG.: **23 --AZOTE--NITROGEN--STICKSTOFF**

9 - CE 0062

	21 - HAUTE PRESSION / HIGH PRESSURE / HOCHDRUCKKASSETTE	22 - BASSE PRESSION / LOW PRESSURE / NIEDRDRUCKKASSETTE
10 - PRESSION ADMISSIBLE MIN/MAX / ALLOWABLE PRESSURE MIN/MAX / ZULASSIGE MIN/MAX - DRUCKE	(PS) -1.0 / 32.00 bar	-1.0 / 25.00 bar
11 - TEMPERATURE ADMISSIBLE MIN/MAX / ALLOWABLE TEMPERATURE MIN/MAX / ZULASSIGE MIN/MAX - TEMPERATUREN	(TS) -20 / 72 °C	-20 / 46 °C
12 - PRESSION DE DEBLOCHEMENT DES PRESSOSTATS / PRESURE BRITTA/ SETTING / DRUCKSCHALTER-SOLLDRUCK	29.0 bar	* bar
13 - PRESSION DE DEBLOCHEMENT DES SOUPAPES / SAFETY RELIEF VALVE SETTING / SICHERHEITSENTL.-SOLLDRUCK	* bar	25.0 bar
14 - PRESSION D'ESSAI D'ETANCHÉITE DE L'UNITÉ / UNIT LEAK TEST PRESSURE / LEAKTEST-DRUCK DES GERÄTE		15.0 bar
15 - TENSION / VOLTAGE / SPANNUNG	400 V 10% 10%	16 - PHASES / PHASES / PHASEN: 3
17 - FREQUENCE / FREQUENCY / FREQUENZ	~ 50 Hz	18 - I MAXIMALE / MAXIMAL AMPERE / MAXIMAL STROM: 30.20 / * A
19 - PUISSANCE ADJONNÉE MAX / MAX POWER INPUT / LEISTUNGSAUFNAHME	18.04 / * kW	
20 - POIDS NET / NET WEIGHT / NETTOGEWICHT	387 Kg	
24 - PRESSION DE DEBLOCHEMENT DES DEVALVES DE RUPTURE / RUPTURE RELIEF SETTING / RUPFENTLÖSCHUNG DES ABFRIEDEREN	* bar	* bar

Carrier

MANUFACTURED IN FRANCE BY
CARRIER GCS - 01120 MONTLUEL - FRANCE
A SUBSIDIARY OF CARRIER CORPORATION
SYRACUSE NEW YORK UNITED STATES OF AMERICA